



 *Chambal Safari*

IMPACT REPORT

2023 - 2024

Table of Contents

01 Introduction

About the Report	3
Letter to Stakeholders	4
Background	5
About Chambal Safari Lodge	6
Mission and values	7
Goals	8
Impact Highlights	9

02 Materiality & Stakeholders

Materiality Matrix	10
Risks	12
Our Stakeholders	13
Eco-Tourism	15

03 Pillars of Sustainability

ENVIRONMENTAL IMPACTS

Carbon	18
Energy	19
Water	20
Land & Materials	21
Waste Management	22
Conservation	23

SOCIAL IMPACTS

Our People	27
Our Community	28

GOVERNANCE

Sound Governance	29
Future Horizons	30

04 Framework & Methodology

Impart Collective	32
GRI Index	34
SDG Index	33

Introduction

About the Report

The contents of this report reflects relevant material topics that impact business operations of of Chambal Safari Lodge (CSL) and in turn the Environment and Social Impacts of the business. This report aims to communicate the comprehensive sustainability efforts and achievements at Chambal Safari Lodge from 1999 to 2024. The report highlights key achievements, recommendations, and overall performance metrics, emphasising CSL's commitment to managing a sustainable tourism destination and operation.

This report has been prepared in reference with the Global Reporting Initiative (GRI) standards and stays valid for the period April; 2023 to March 2024. A detailed GRI content index can be found at the end of this report. This is a voluntary report.

Scope of the Report

The report provides a comprehensive overview of the sustainability efforts at Chambal Safari Lodge from 1999 to 2024. It covers the establishment and evolution of the National Chambal Sanctuary, detailed ecological data, current sustainability practices, challenges faced, and the economic and social contributions to the local community.

The objective of this report is not only to highlight the sustainability achievements and goals but also to outline the organisation's future plans and frameworks that are crucial for fostering a sustainable future.

By detailing past and present efforts alongside the vision for the future, it is endeavoured to provide a transparent and thorough account of the lodge's ongoing commitment to sustainability and conservation.

Historical Context:

The report briefly covers the establishment and evolution of the National Chambal Sanctuary.

Ecological Data:

It provides detailed information on the biodiversity within the sanctuary, including species of plants, birds, reptiles, mammals, and butterflies.

Current Status:

The report includes an analysis of the sanctuary's current sustainability practices in energy efficiency, water management, and waste disposal.

Challenges:

It identifies the primary challenges faced by the sanctuary, such as resource exploitation and the impact of tourism.

Community Impact:

The report outlines the support to the local community, including employment, local sourcing, and support for small enterprises.

Future Horizons:

Plans for further development in sustainability practices and community engagement, including The Indian School of Nature.

Letter to Stakeholders

We are excited to share the progress and initiatives at Chambal Safari Lodge, built on a 500-year heritage. Our mission is to preserve the natural and cultural heritage of the Chambal Valley through sustainable practices.

Over the past 25 years, we have reclaimed 20 acres of forest and protected 10 hectares of natural habitat. Our conservation efforts have boosted the Gharial population from 200 to over 2,000. We harvest 100% of our rainwater and aim to achieve 100% solar energy by 2025.

Our work extends to the local community and involves collaboration with organizations like TSA, BNHS, and GCA. Ram Pratap Singh's advisory roles, including with INTACH and the National Chambal Sanctuary, underscore our commitment to conservation.

Our vision is to create a peaceful, sustainable ecosystem in Chambal. This principle guides our operations and community engagements.

Thank you for your continued support. Together, we can ensure the Chambal Valley remains a sanctuary for wildlife and people.

Warm regards,
Ram Pratap Singh and Anu Dhillon

Founders, Chambal Safari Lodge
Chambal Conservation Foundation

"Together we shall create an ecosystem in Chambal where all are at peace with nature."



Background

Chambal Valley

GPS Coordinates: 26.8725° N, 78.5642° E

Carved from centuries of flood and rainwater, the sprawling ravines of the Chambal Valley possesses a unique history amongst the people of the land and boasts a diverse and rich topography and environment. Indian texts refer to the Chambal as the Charmanyavati - originating from the blood of thousands of cows sacrificed by the Aryan King Rantideva. Its ancient origins have undoubtedly contributed to the Chambal's preservation, allowing it to remain untouched and unpolluted, and thus one of India's most pristine rivers.

Nestled between the ravines and rivers lies the National Chambal Sanctuary, established in 1979 with a mission to revive the decimated gharial (a unique fish-eating crocodile) populations. The sanctuary spans a 400 km stretch of the Chambal River, extending up to 6 km wide on both sides. Over the years, the sanctuary has faced various challenges, including resource exploitation and the need for sustainable practices. Despite these challenges, the pristine natural habitat, abundant wildlife, and unique cultural heritage of the Chambal Valley have made it an ideal site for eco-tourism. Additionally, the ancestral land on which the lodge is situated has belonged to the family for many generations, dating back to 1472, deepening the roots of commitment to preserve and nurture this ancient and exceptional land.

The Sanctuary

Over time, the lodge has expanded its scope, evolving to include an eco-lodge that provides guests with a unique opportunity to encounter over 198 species of small mammals and birds, ranging from fruit bats to palm civets. The sanctuary serves as one of the last surviving habitats of the Gangetic River Dolphin and provides protection for 2000 gharials and 300 marsh crocodiles. Furthermore, the sanctuary is home to eight species of turtles and the smooth-coated otters, offering a haven for these remarkable creatures.



About Chambal Safari

The History

Since 1472, Jarar has been the ancestral home of the family. In the late 1890s, Rai Saheb Ch. Suraj Pal Singh, the Zamindar of Jarar, constructed the Mela Kothi amidst expansive woodlands and pastures. This location served as the family's camp office for their prestigious bi-annual cattle fair, attracting traders from as far as Maharashtra and Orissa. By the 1990s, the fair's attendance declined, and the Kothi fell into disrepair.

The Beginning

In 1999, Ram Pratap Singh, a conservationist and IIT engineer, along with his wife Anu, an environmental scientist, began restoring the neglected property. Spanning 35 acres of heritage plantation and surrounded by farmland, Mela Kothi - The Chambal Safari Lodge emerged as a sanctuary of peace, tranquility, and gracious hospitality.

The Stay

The lodge offers thirteen rooms and cottages that blend the warmth of local homes with modern amenities. Efforts have been made to ensure the lodge is eco-friendly and harmonizes with its natural surroundings.

Dining

The Mela Kothi is renowned for its hospitality and culinary excellence. The lodge's kitchen prepares authentic 'home-cooked' buffet spreads using fresh, organically grown ingredients from their own farms or sourced directly from local farmers. The menu features a rich mix of local specialties, contemporary Indian, and Continental dishes.

Meals are enjoyed amidst beautiful old trees, extensive gardens, and restored 19th-century buildings. Evening bonfires offer opportunities to interact with other guests or enjoy stargazing. Tea and coffee are available in the main garden throughout the day, allowing guests to help themselves as often as they wish.



Mission & Values

The Mission

At the beating heart of Chambal Safari Lodge's mission is a steadfast commitment to conserving biodiversity, promoting sustainability, and supporting local communities. We strive to protect and revive wildlife populations in the Chambal Valley while implementing practical sustainable practices in our operations. Our aim is to support and develop the local community through employment, training, and economic contributions, fostering a sense of wellbeing and pride. Furthermore, we promote sustainability by creating exposure through eco-tourism, fostering a deeper appreciation for a universal environmental ethos, and ensuring that our mission is embraced and carried forward by our guests, staff, and stakeholders.

Values that drive us

Our values are built upon these 4 key principles



Conservation

Protecting and reviving wildlife populations. Rewilding the land leading to ecosystem regeneration.



Sustainability

Implementing sustainable practices in energy, water management, and waste disposal.



Community engagement & development

Supporting local communities through employment, training, and economic contributions.



Sustainable Tourism Development

Promoting responsible and sustainable tourism practices.



Goals

As we look towards the future, Chambal Safari Lodge aims to achieve 100% solar energy reliance by 2025, maintain a water positivity rate of 37,400 liters per room night, and continue supporting local communities through economic contributions and training.

These goals reflect our dedication to financial stability and sustainable operations, guiding us towards a future where financial health and environmental stewardship go hand in hand. Our goals can be summed up to three key elements:



Achieving 100% Solar Energy Reliance by 2025

Our goal is to transition to complete solar energy reliance by 2025. This initiative involves installing advanced solar panels and optimizing our energy consumption to ensure all our power needs are met sustainably. By harnessing solar energy, we aim to reduce our carbon footprint, decrease dependency on non-renewable energy sources, and set a benchmark for eco-friendly hospitality operations. This move not only supports environmental conservation but also aligns with our long-term vision of promoting green tourism.



Improve upon Water Positivity Rate of 37,400 Liters per Room Night

Water conservation is a critical aspect of our sustainability efforts. We aim to improve upon a water positivity rate of 37,400 liters per room night, ensuring that our water usage is offset by efficient water harvesting, recycling, and conservation practices. This includes the use of rainwater harvesting systems, wastewater treatment, and promoting water-saving practices among our guests and staff. By achieving this target, we strive to contribute positively to the local water ecosystem and mitigate the impact of our operations on regional water resources.



Supporting Local Communities via Economic Contributions and Training

Supporting local communities is central to our mission. We are dedicated to providing economic contributions and training opportunities to the surrounding communities. This involves sourcing produce and materials locally, creating job opportunities, and offering skill development programs to enhance the livelihoods of local residents. Our training initiatives focus on hospitality, conservation, and sustainable practices, innovation and technology empowering the community and fostering a symbiotic relationship. By investing in the local economy and people, we aim to create a positive social impact and ensure that our growth benefits those around us. (Seeding Micro-entrepreneurs)



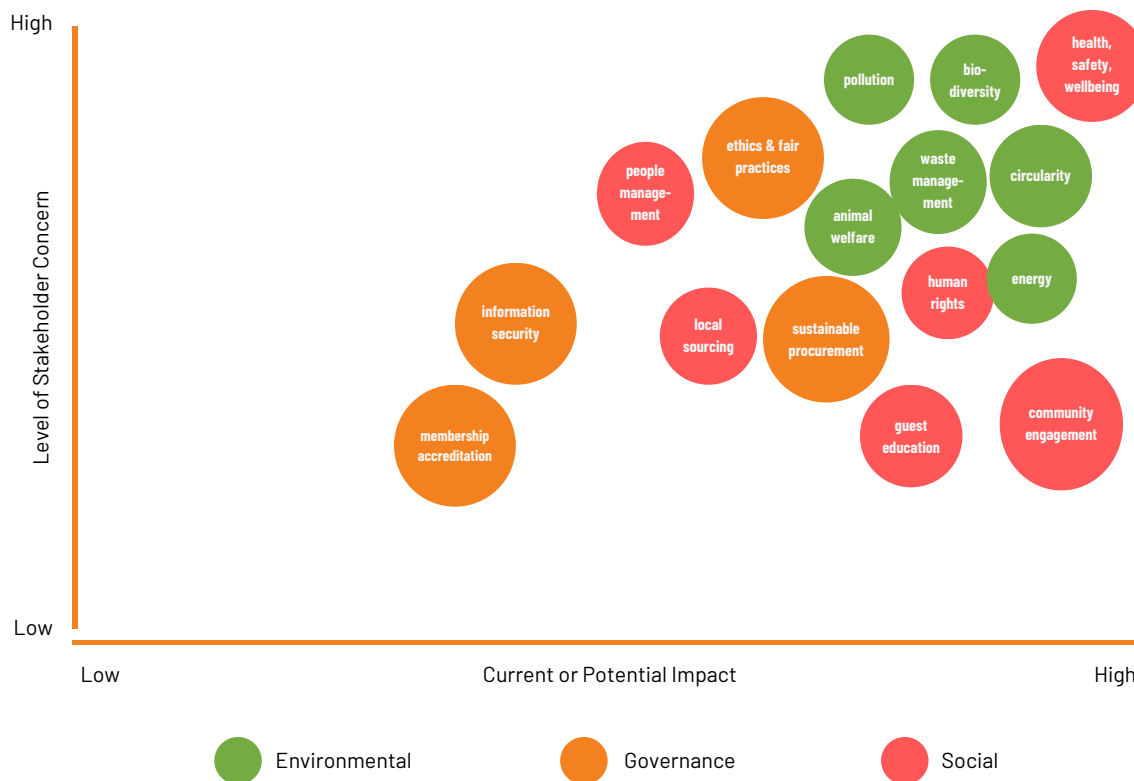
Impact Highlights

In 2023, Chambal Safari Lodge made notable strides in sustainability, successfully offsetting 5.87 tons of carbon annually with the potential to reach 51 tons. Our impressive water positivity rate of 37,400 liters per room night underscores our commitment to efficient water management. We also advanced our energy efficiency with a hybrid grid/DG set/solar model, aiming for 100% solar reliance by 2024. Financially, we reinvested 67% of our revenue into the local community and allocated 20% of our profits to community development programs, with all projects funded through our lodge's revenue.

Highlight	2023
Employees	30
Employee turnover rate	5 per year
% of employees under permanent contract	100%
REVENUE (INR)	3,00,00,000
OPERATIONAL COSTS (INR)	1,50,00,000
ECONOMIC VALUE GENERATED AND DISTRIBUTED TO STAKEHOLDERS (INR)	2,00,00,000
PROFIT AFTER TAXES (INR)	1,20,00,000



Materiality Matrix



Frequency of Materiality Assessment:

Updates are conducted annually.

Information Sources for Materiality Assessment:

Internal sources include internal audits, data collection, and benchmarking.

External sources involve validation based on globally accepted protocols such as GHG.

Criteria for Determining Significance of Material Topics:

At Chambal Safari Lodge, sustainability is a cornerstone of our business. Therefore, all ESG (Environmental, Social, and Governance) material topics are of high importance to our operations.

Integration of Material Topics into Business Strategy:

Every business decision, whether operational or investment-related, is based on the ESG goals we aim to achieve.

Responsibility for Conducting the Materiality Assessment:

RP Singh.

Validation of Materiality Assessment Results:

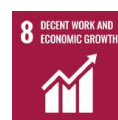
The validation process involves year-over-year data collection and benchmarking.

Materiality Matrix

Our materiality matrix identifies key environmental, social, and governance topics that are crucial to our business and stakeholders. High-priority topics include biodiversity, circularity, energy consumption, waste management, climate, water management, animal welfare, human rights and modern slavery, people management, community involvement, health, safety, and wellbeing, guest education, local sourcing, sustainable procurement, ethics and fair operating practices, organization governance, SDGs, and CSR.

Material Topic	Category	Importance
Biodiversity	Environmental	High
Circularity	Environmental	High
Energy Consumption	Environmental	High
Waste Management	Environmental	High
Climate	Environmental	High
Water Management	Environmental	High
Packaging	Environmental	Medium
Animal Welfare	Environmental	High
Hazardous Materials	Environmental	High
Pollution	Environmental	High
Human Rights & Modern Slavery	Social	High
People Management	Social	High
Community Involvement	Social	High
Health, Safety and Wellbeing	Social	High
Guest Education	Social	High
Local Sourcing	Social	High
Sustainable Procurement	Governance	High
Ethics & Fair Operating Practices	Governance	High
Membership & Accreditations	Governance	Medium
Organization Governance	Governance	High
SDGs	Governance	High
CSR	Governance	High
Information Security	Governance	Medium

We conduct a materiality assessment annually, using both internal audits and external validation based on globally accepted protocols.



Risks

The establishment of an eco-lodge, even though designed with the intention of melding with the ecosystem, continues to exert a level of strain upon the environment. These pressures underscore the need for ongoing and enhanced sustainability measures to mitigate our impact while supporting the delicate balance of this unique habitat.



Biodiversity

- The Lodge is home to a diverse range of species, including 57 species of endemic plants and 5 species of wildflowers.
- There are 165 species of resident and migratory birds on the lodge grounds.
- The forest around the lodge hosts 7 species of reptiles, 18 species of mammals, and 21 species of butterflies.
- Two rain-fed natural water bodies contribute significantly to the local ecosystem.
- The lodge's efforts have resulted in a net carbon offset of 5.87 tons per annum, with the potential to reach up to 51 tons per annum.



Resource Utility

- Energy Efficiency: We utilize a hybrid grid/DG set/solar model with the goal of achieving 100% solar energy by 2025.
- Water Management: We harvest 100% of our rainwater, achieving a water positivity rate of 37,400 liters per room night.
- Waste Management: We employ natural treatment for kitchen and organic waste, solid waste segregation, and the use of eco-friendly products.
- Community Engagement: We make significant economic contributions to the local community, including providing employment and upskilling opportunities and supporting local farmers and artisans.



Infrastructure Challenges

- Exploitation of Natural Resources: The demand for Chambal sand for construction exerts tremendous pressure on the fragile ecosystem, affecting groundwater levels and agricultural activities.
- Lack of Awareness and Alternatives: There is a need for greater understanding of the detrimental impacts of exploiting natural resources and for developing sustainable livelihood alternatives.
- Tourism Impact: While tourism can drive conservation efforts, irresponsible tourism practices can harm the ecosystem. The sanctuary aims to adapt tourism to support conservation best practices.

Our Stakeholders

Within our sustainable vision, our stakeholders play a pertinent and crucial role in shaping our commitment to responsible business and ethical practices. Our internal stakeholders are led by Ram Pratap Singh and Anu Dhillon, who focus on sustainable ecotourism, agriculture, and economic and social welfare. They have a high level of influence and are engaged through regular meetings, direct communication, and strategic decision-making involvement. Additionally, the Team Chambal Safari & Chambal Agritech Incubator, comprising 50 members, is dedicated to operational sustainability, community welfare, and conservation. Their engagement involves regular briefings, training sessions, and active participation in sustainability practices.

Our external stakeholders include suppliers and vendors who prioritise ethical sourcing and sustainable business practices. They are engaged through regular audits and sustainability criteria for selection. We strive to prioritise local vendors as much as possible and have established a certified network of green vendors for all sustainability-related work and aspects of our operations.

The Chambal community and partner farmers, with interests in economic welfare and sustainable agriculture, are highly influential and are engaged through quarterly meetings and direct support.

Finally, the preservation of the natural, built, cultural, and intangible heritage of the Chambal Valley is crucial, involving collaborative conservation programs and educational initiatives with NGOs and government bodies.



Our Stakeholders

I. Key Stakeholders

1. Internal Stakeholders:

Ram Pratap Singh & Anu Dhillon (Directors):

- Interests: Sustainable ecotourism and agriculture, economic and social welfare.
- Level of Influence: High
- Engagement Strategies: Regular meetings, direct communication, strategic decision-making involvement.

Team Chambal Safari & Chambal Agritech Incubator (50 PAX):

- Interests: Operational sustainability, community welfare, and conservation.
- Level of Influence: High
- Engagement Strategies: Briefings, training sessions, involvement in sustainability practices, innovation and technology.

Guests of Chambal Safari Lodge:

- Interests: Quality ecotourism experience, wildlife conservation, cultural and environmental sustainability.
- Level of Influence: Medium/High
- Engagement Strategies: Surveys and feedback forms, informational sessions, involvement in conservation activities, personalized communication, digital communication via social media.

2. External Stakeholders:

Suppliers/Vendors:

- Interests: Ethical sourcing, sustainable business practices, economic stability.
- Level of Influence: Medium
- Engagement Strategies: Regular audits, sustainability criteria for selection, quarterly reviews.

Chambal Community and Partner Farmers:

- Interests: Economic welfare, sustainable agriculture, community development.
- Level of Influence: High
- Engagement Strategies: Quarterly meetings, community projects, direct support and communication.

Natural, Built, Cultural & Intangible Heritage of the Chambal Valley:

- Interests: Conservation and protection, promotion of heritage.
- Level of Influence: High
- Engagement Strategies: Conservation programs, educational initiatives, collaborative projects with NGOs and government bodies.

Eco Tourism

As a Sustainable Solution

The Chambal Safari Lodge actively communicates its sustainability achievements through various channels to ensure transparency and engage stakeholders. The Lodge utilises a variety of methods to communicate its sustainable commitment and practices, such as reports and publications on our public channels and social media, a variety of workshops and educational programs for the lodge's guests, and partnership and collaboration initiatives with organisations. Additionally, we organise fundraisers to support conservation efforts, thereby fostering a deeper understanding and appreciation of our sustainability initiatives among a broader audience. Through these diverse communication strategies, we aim to engage stakeholders effectively and promote our dedication to environmental stewardship and sustainable tourism.

Key Initiatives



Reports and Publications: Regular reports detailing sustainability initiatives, achievements, and future goals are published and made available to the public.

Website and Social Media: The Lodge uses its website and social media platforms to share updates on sustainability projects, milestones achieved, and ongoing efforts.

Educational Programs: The Lodge organises educational programs and workshops for guests and the local community, highlighting the importance of sustainability and conservation efforts.

Partnerships and Collaborations: By collaborating with organisations like TSA, BNHS, and GCA, and funding projects like smart patrolling, the Lodge highlights its commitment to conservation and sustainability.

Guest Engagement: Informative sessions and guided tours for guests provide insights into the sustainability practices implemented at the Lodge, fostering a deeper understanding and appreciation of the efforts made.



5 Pillars of Sustainability

At Chambal Safari Lodge, we focus on five critical sustainability elements: Air, Water, Land, Community, and Conservation. These pillars reflect our commitment to preserving the Chambal Valley's environment and culture. By addressing these areas, we aim to benefit the ecosystem, local communities, and wildlife, fostering a lasting positive impact. Our projects and studies are funded through our revenue, ensuring our sustainability efforts are integrated into our business model and directly support our mission.



Air

Air - Carbon - Sound - Light



Water

Rain Water - Ground Water



Land

Chemicals - Materials - Waste



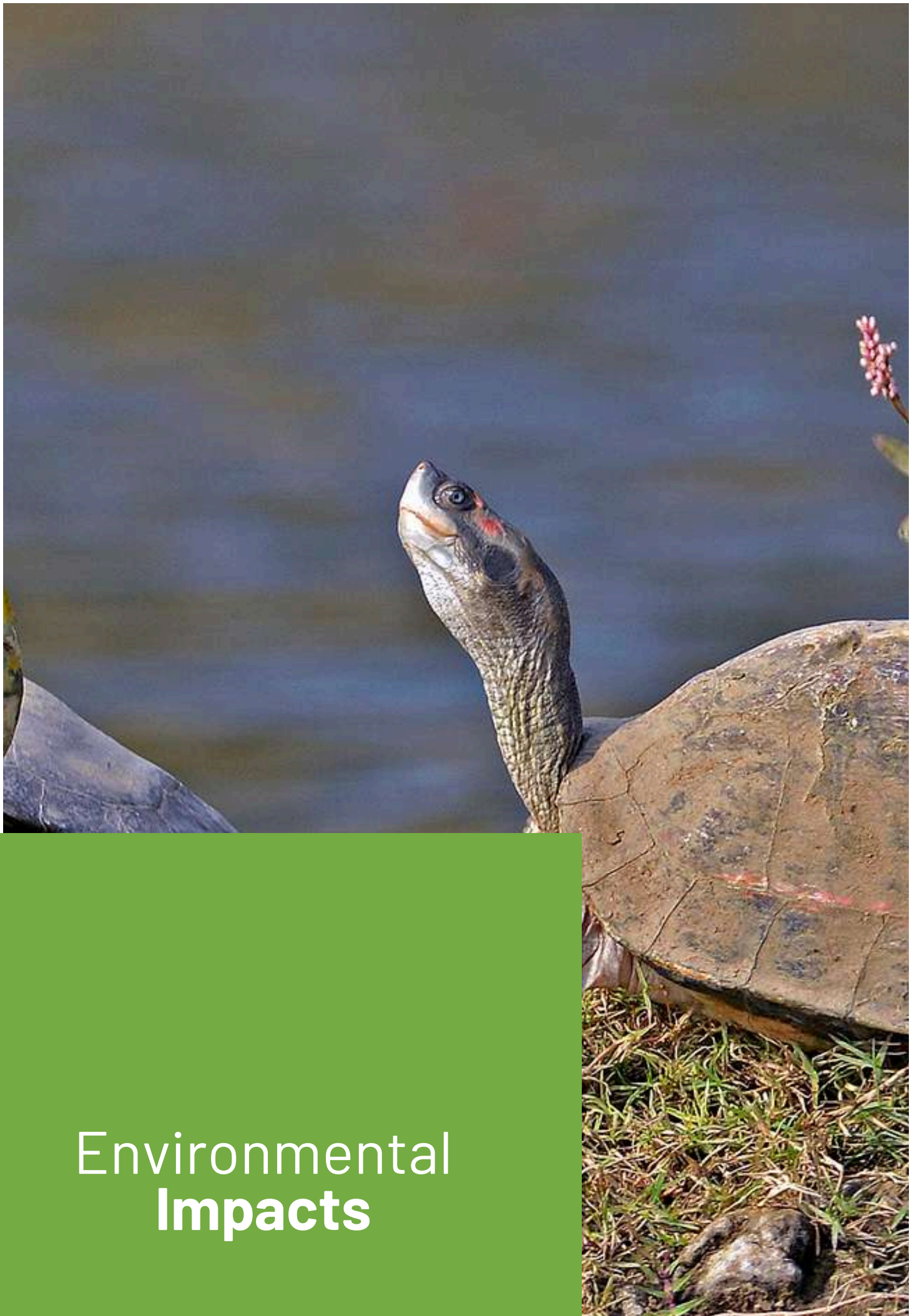
Conservation

Natural, Built & Intangible Heritage



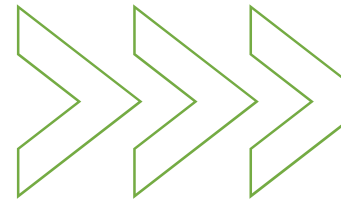
Community

Wealth & Wellbeing



Environmental **Impacts**

Carbon



The operations at Chambal Safari Lodge is carbon negative.

Improving air quality is a fundamental pillar of our sustainability efforts at Chambal Safari Lodge. We understand that clean air is essential for the health of our environment and the wellbeing of our guests and the local community. To this end, we have set ambitious targets for reducing our emissions and have made significant investments in emission reduction technologies.

Key Indicator Activity / Project / Outcome

Emissions Reduction Initiatives

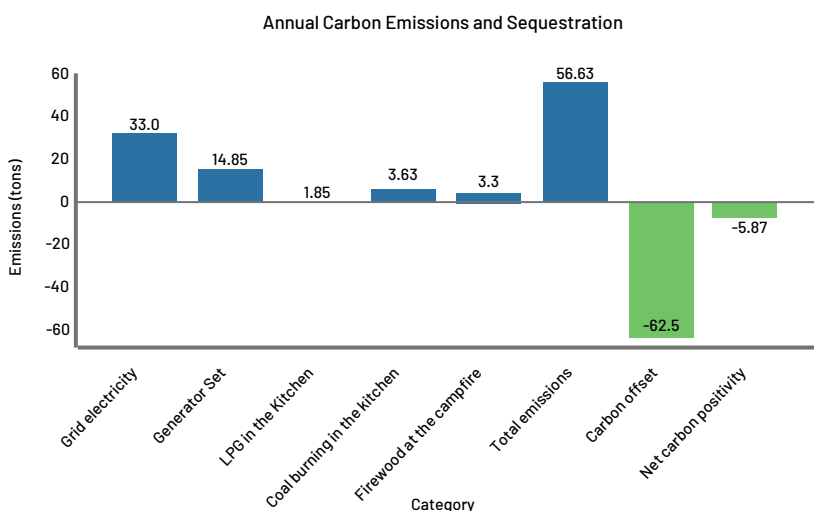
- Future Targets: Focused on organic methods.
- Technological Investments: Rewilding 25 acres of lodge land.
- Employee Education: Monthly briefings on reducing emissions.

Carbon Offsetting and Sequestration

- Absolute Carbon Offset: 5.87 tons per annum, with potential to reach 51 tons.
- Carbon Negativity per Room Night: 5.33 kg, potentially up to 48 kg.
- Total Carbon Sequestration: 62.5 tons per annum by planting 2,500 trees (25 kg/tree).

Annual Carbon Emissions

- Grid Electricity: 33 tons
- Generator Set: 14.85 tons
- LPG in the Kitchen: 1.85 tons
- Coal Burning in the Kitchen: 3.63 tons
- Firewood at the Campfire: 3.3 tons
- **Total Emissions: 56.63 tons**



Net Carbon Negativity

Achieving a net carbon negativity of 5.87 tons per annum, equivalent to offsetting the emissions of approximately 1,100 room nights.

Energy



The utility of energy can be a complex conversation when it involves the environment. At Chambal Safari Lodge, we are committed to harmonising our energy use and reducing our footprint wherever possible. By harnessing advanced technology and implementing careful monitoring, we have successfully reduced our total energy use by 30% in the last 5 years. Additionally, we have invested in the latest technology to achieve further reductions in the future.

Energy Model: Hybrid grid/DG set/solar model

Source	Consumption
Grid Electricity Consumption	• 35,882 kWh
Generator Set Electricity Consumption	• 18,150 kWh (operating at 3.3 kWh per liter)
Solar Energy	• 16209.6 kWh
Total Electricity Consumption	• 70242 kWh
Energy Consumption per Room Night	• 54 kWh / guest room night

Goal

Achieve 100% solar energy by 2025 with a 15 KW solar power unit

Energy Reduction Measures

Energy-efficient LED lighting, advanced air conditioners, heaters, and water geysers
 Employee Education: Monthly briefings on energy conservation



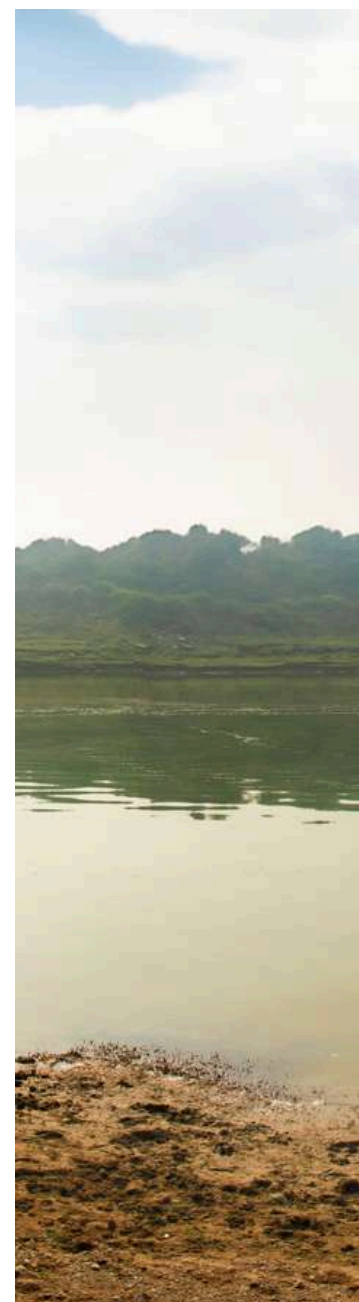
Water



Water is a vital resource at Chambal Safari Lodge, and we prioritize water positivity in our sustainability practices. We harvest 100% of our rainwater using a half-acre sink pond and employ advanced irrigation systems like drip and sprinklers for farming and gardens, enhancing water efficiency. Low-pressure bath fittings further reduce usage. All water is reused or recycled, with wastewater treated through integrated grease traps and plant-based systems. Our net annual rainwater harvest significantly exceeds total water consumption. We also heatmap the river basin to guide our water sustainability practices.

Key Indicator Activity / Project / Outcome

Rainwater Harvesting	<ul style="list-style-type: none"> Harvest 100% of rainwater using a half-acre sink pond
Irrigation Systems	<ul style="list-style-type: none"> Drip irrigation for farming operations Sprinkler irrigation for gardens, lawns, and farms
Rainwater Harvested	<ul style="list-style-type: none"> Net total of 42.79 million liters per annum
Water Positivity	<ul style="list-style-type: none"> Approximately 37,400 liters per room night
Water Usage Reduction Measures	<ul style="list-style-type: none"> Low-pressure operated bath fittings
Water Reuse and Recycling	<ul style="list-style-type: none"> 100% of water is reused or recycled
Wastewater Treatment	<ul style="list-style-type: none"> Integrated grease trap followed by natural plant-based treatment
Net Rainwater Harvest	<ul style="list-style-type: none"> 81.7 million liters per year
Wastewater Treatment	<ul style="list-style-type: none"> Integrated grease trap followed by natural plant-based treatment
Total Water Consumption	40.57 million liters - 2 million liters for the lodge (20 acres) - 6.8 million liters for the olive farm (12 acres) - 6.4 million liters for the mustard farm (8 acres) - 23.21 million liters for the wheat farm (11 acres) - 2.16 million liters for the fish pond (1 acre)
Actual Water Consumption (Lodge & Farm)	<ul style="list-style-type: none"> 40.57 million liters
Water Recharge	<ul style="list-style-type: none"> 41.13 million liters, equivalent to the consumption of 1,100 room nights (offset)

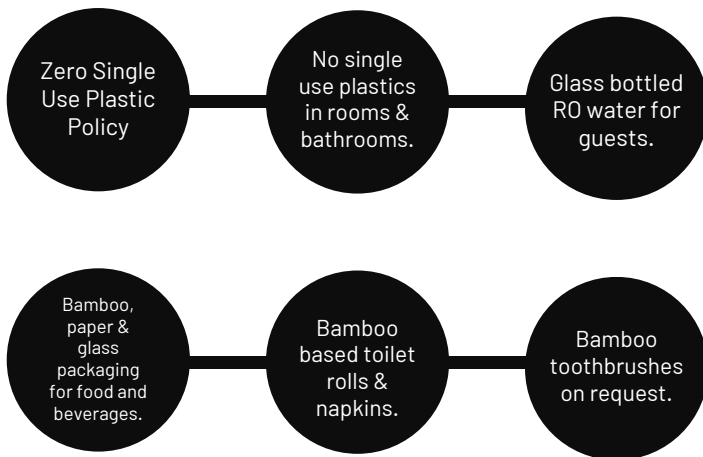


Land & Material Use






Efficient use of materials and resources is the bedrock of our sustainability efforts at Chambal Safari Lodge.

Our use of non-toxic and natural materials signifies our understanding that even the smallest actions can have a profound impact, particularly in the context of our biodiversity. The materials we use are meticulously chosen based on their properties, interactions, and methods of acquisition. We strive to procure locally as much as possible, reinforcing our commitment to supporting the local economy and reducing our environmental footprint.

Non-Toxic



Natural Materials

-  Furniture & Furnishing
-  Repurposed antique furniture pieces in the rooms.
-  Natural fiber and coloured soft furnishings
-  Dining
-  Organic/natural locally sourced food menus.



Waste Management

At Chambal Safari Lodge, waste management is a critical component of our sustainability strategy, reflecting our commitment to minimizing environmental impact through responsible practices. We have established robust partnerships with local waste handlers to ensure effective recycling and disposal processes. Our performance in waste management is meticulously tracked and reported on a monthly basis, allowing us to continually refine and improve our strategies.

Waste Management Highlights:

We have established partnerships for waste recycling and disposal, actively engaging local waste handlers.

Waste management performance is tracked and reported through monthly data collection.

Kitchen and organic waste are naturally treated before disposal.

Solid waste is segregated and properly disposed of.

Bath water is disposed of in coal-lined soak-pits.

Toilet waste is collected through septic tanks.

We use environmentally friendly toiletries and cleaners.

Environmentally friendly soaps and powders are used for laundry and dishwashing.

Eco-friendly repellents and sprays are employed.

Plastic-free, corn starch-based bin liners are used in rooms and the kitchen.

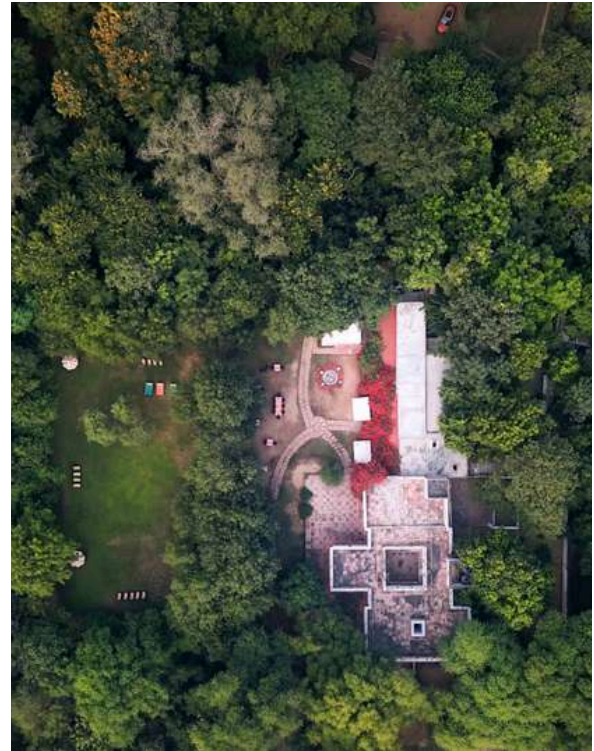
Unbleached bamboo paper is used for toilet rolls, tissues, kitchen rolls, and baking paper.



Conservation



Land conservation is a crucial aspect of our sustainable vision. Over the past 25 years, we have reclaimed 20 acres of man-made forest, transforming degraded land into thriving ecosystems that support a wide range of biodiversity. Approximately 30% of our operations are situated in protected areas, underscoring our commitment to preserving these vital habitats. Our conservation efforts in the sanctuary has led to an increase in the nesting sites for Gharials on the riverbanks, contributing to their population growth from 200 in 1979 to over 2,000 today. Our main habitat focus areas for protection and restoration include the Chambal River and surrounding farmscapes. We have protected or restored 10 hectares of natural habitat and maintain two rain-fed natural water bodies that contribute to the local ecosystem.



Despite challenges such as threats from miners, we implement measures to protect species listed on the IUCN Red List, including regular boat patrols to prevent poaching. Our habitat protection and restoration plans are reviewed annually and communicated to stakeholders through social media and workshops. We support organizations like TSA, BNHS, and GCA, and have recently funded a smart patrolling project in the National Chambal Sanctuary, where nesting sites in the tourism zone have increased from 1 to 5 in the last 25 years. By conducting scientific listings and holding quarterly meetings, we ensure our personnel are equipped with the latest data and trends in conservation, adapting our practices accordingly. Our dedication to land conservation is a testament to our mission of fostering a sustainable and thriving environment.

IUCN Red List

National Chambal Sanctuary



There are several flora and fauna listed under the IUCN Red List that are found in the ecosystem of the National Chambal Sanctuary. Our on-going conservation efforts with the help of the community as well as local government bodies is crucial in working towards sustaining these critically endangered and vulnerable species that assist in improving biodiversity thereby combatting climate change. Here is a list of documented species from the IUCN Red List that is found in the region we call home.

List of Aquatic species in National Chambal Sanctuary			
SI No	Common Name	Scientific Name	IUCN Status
Reptiles			
1	Red Crowned Roofed Turtle	<i>Batagur kachuga</i>	Critically Endangered
2	Three Striped Roofed Turtle	<i>Batagur dhongoka</i>	Critically Endangered
3	Narrow Headed Softshell Turtle	<i>Chitra indica</i>	Endangered
4	Indian Softshell Turtle	<i>Nilssonia gangetica</i>	Endangered
5	Peacock Softshell Turtle	<i>Nilssonia hurum</i>	Endangered
6	Crowned River Turtle	<i>Hardella thurjii</i>	Endangered
7	Indian Flapshell Turtle	<i>Lissemys punctata</i>	Vulnerable
8	Gharial	<i>Gavialis gangeticus</i>	Critically Endangered
9	Mugger	<i>Crocodylus palustris</i>	Vulnerable
Mammals			
10	Ganges river dolphin	<i>Platanista gangetica</i>	Endangered
11	Smooth Coated Otter	<i>Lutrogale perspicillata</i>	Vulnerable



Gharials

A Success Story

About Gharials

- The Gharial (*Gavialis gangeticus*) is a unique fish-eating crocodile species, recognisable by its long, thin snout and numerous sharp teeth.
- Gharials are critically endangered and are native to the Indian subcontinent, primarily found in the major river systems.

Success of the Rehabilitation Program

- The Chambal Basin has been the site of the most successful Gharial rehabilitation program since 1979.
- At the start of the program, the Gharial population had dwindled to as few as 200 individuals.
- Thanks to dedicated conservation efforts, the Gharial population in the Chambal Basin has now increased to over 2,000 individuals.
- Key factors contributing to this success include habitat protection, rewilding with endemic species, and rigorous anti-poaching measures.

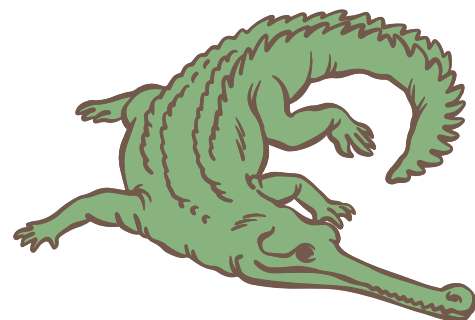
Key Metrics of Success

- Increase in Gharial nesting sites along the Chambal River banks.
- Annual surveys to monitor the health and presence of the Gharial population.
- Collaboration with conservation groups and local communities to ensure sustainable habitat management and protection.



Continued Efforts

- Ongoing habitat restoration and protection plans are reviewed and updated annually.
- Regular patrolling by our boats to prevent poaching and ensure the safety of the Gharial population.
- Educational initiatives and community engagement to raise awareness about the importance of Gharial conservation.



happy gharial

Biodiversity Conservation



Biodiversity is the taproot of conservation, and at Chambal Safari Lodge, we are proud to boast a kaleidoscope of creatures within our purview. Our lodge is home to over 165 species of migratory birds, 57 species of endemic plants, and 5 species of wildflowers. Our ability to rewild, maintain, and improve these ecosystems is a testament to our ecological commitment.

Biodiversity Highlights

- Scientific listings are conducted to understand the biodiversity value of protected areas.
- The effectiveness of biodiversity impact mitigation is measured by annual surveys.
- We have protected or restored 10 hectares of natural habitat.
- We have seen an increase in nesting sites for Gharials on the riverbanks, which serves as a metric of the success of our habitat protection and restoration efforts.
- We conduct annual surveys to monitor the presence and health of these species.
- The forest cover is populated by 57 species of endemic plants and 5 species of wildflowers.
- There are 165 species of resident and migratory birds on the lodge grounds.
- The area is home to 7 species of reptiles, 18 species of mammals, and 21 species of butterflies commonly found in the forest around the lodge.

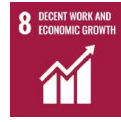
Our next steps include the establishment of the Chambal Agritech Incubator and The Indian School of Nature.





Social
Impacts

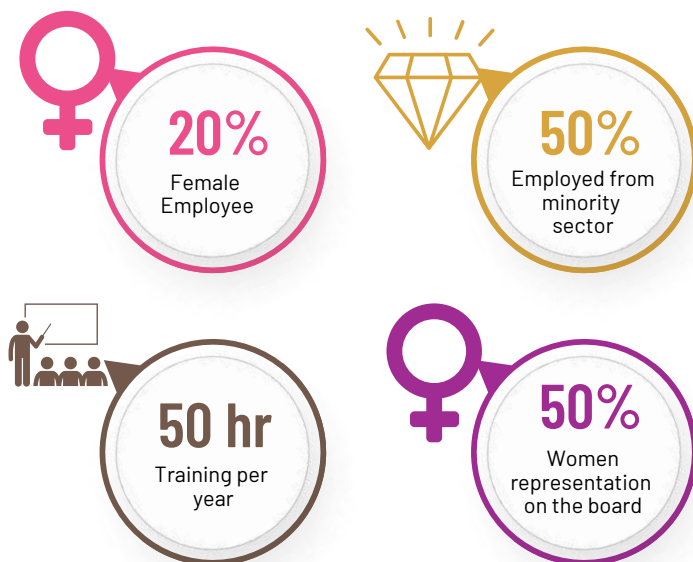
Our People



Our commitment to our people is reflected in our employment and upskilling initiatives, where almost all team members are from the local community and have been trained in-house. We prioritise local sourcing, purchasing most consumables from local farmers and artisans. Through economic contributions, training programs, and support for small enterprises, we imbibe a sense of wellbeing, self-worth, and pride in our community.

We offer significant benefits for full-time employees, including all provisions as per Indian government norms, plus an additional 45 days of paid leave in the summers. Our policies are designed to ensure healthy well-being and work-life balance, providing free health coverage, a provident fund, and a happy working environment.

On average, employees receive 50 hours of training per year, with the impact of this training on performance measured through daily assessments. We have implemented policies to ensure equal payment across our workforce. Currently, 50% of our workforce is comprised of minorities, reflecting our commitment to diversity and inclusion.



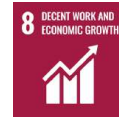
Workspace Environment & Culture

Chambal Safari Lodge fosters a culture of sustainability and community engagement, ensuring that every project or task aligns with our environmental and social responsibility benchmarks. We also cultivate a supportive and inclusive culture, encouraging open discussions and actively promoting diversity and inclusivity in hiring practices.

Our diverse guests comprises a blend of local and international travellers, with the second-largest nationality being French.

Additionally, all of our vendors who are not directly employed by us are local vendors, further supporting the local economy and community.

Our Community



Community engagement is another fundamental pillar of our sustainability efforts at Chambal Safari Lodge. We believe that persistent and regular dialogue is essential to effectively engage local communities in conservation efforts. By communicating our initiatives through our website and social media, we ensure transparency and foster a deeper connection with the community.

We focus on seeding small enterprises within the community.



Persistent and regular dialogue is key to engaging local communities in efforts to protect species.



Community engagement efforts are communicated through our website and social media platforms.



We contribute economically to the community, with 67% of our revenue being reinvested locally.



Employment and upskilling: Almost all team members are from the local community and have been trained in-house.



Local purchases: Most of the consumables in our kitchens are sourced directly from local farmers and artisans.





Governance

Sound Governance



We adhere to stringent ethical practices, ensuring compliance with legal requirements and maintaining high standards of transparency and integrity. Our governance framework is designed to foster a culture of ethical decision-making and accountability, with a focus on sustainability and responsible business practices.

Despite our Director Ram Pratap Singh's association with the socialist party of the region, the organisation, initiatives, and activities remain politically neutral. This neutrality ensures that our efforts are inclusive and focused solely on achieving our sustainability and conservation goals, free from political influence.

Our Commitment to Ethical Business Practices and Governance

Built on a 500-year heritage, The Chambal Safari Lodge offers an immersive experience of the natural and cultural heritage of the Chambal Valley, employing sustainable social and ecological business practices.

The Chambal Conservation Foundation

Funded and operated by The Chambal Safari Lodge, the Chambal Conservation Foundation is dedicated to preserving the pristine environment of the Chambal Valley. Our sustainable practices are centered around three key areas:

- Natural & Cultural Heritage
- Community Development
- Ecological Sustainability



Governance and Leadership

Ram Pratap Singh, a key leader at The Chambal Safari Lodge, holds several advisory and leadership positions, reflecting our commitment to sound corporate governance and environmental stewardship:

- Regional Convenor of INTACH (Indian National Trust for Art & Cultural Heritage), Agra Chapter since 1999.
- Member of advisory boards for the National Chambal Sanctuary, Sur Sarovar Bird Sanctuary, Okhla Bird Sanctuary, and Patna Bird Sanctuary since 2002.
- Member of the River Watch group since 2006.
- Member of the Uttar Pradesh Tourism Promotion Board since 2014, contributing to the formulation of state tourism policies.
- Honorary Wildlife Warden for National Chambal Sanctuary.
- Member of the State Wildlife Board since 2015.
- Advisor to the Lion Safari Project, Etawah.
- Advisor to the Uttar Pradesh Ministry of Environment & Forests.

Through these roles, Ram Pratap Singh ensures that our practices align with regional and national conservation goals, reinforcing our commitment to sustainability and responsible tourism. Our governance framework integrates environmental preservation with community engagement, positioning The Chambal Safari Lodge as a leader in sustainable tourism and conservation.

Future Horizons



Imagine a hub—a forum for exchanging ideas and a place of learning—dedicated to the preservation, conservation, and promotion of our environment, nature, and sustainability. Now imagine that this place is situated in a location that has already demonstrated its ability to foster sustainable change and growth. What began as a visionary idea is now an integral part of Chambal Safari Lodge’s future. We’re calling this beacon towards the future “The Indian School of Nature”.

The Indian School of Nature is a dedicated institution for learning and research, emphasising an interface with government, industry, and individuals to create on-ground impact in several critical fields. These fields include environment and wildlife conservation, climate-smart and compatible agriculture, sustainable development, and strategies for mitigating and adapting to climate change. Additionally, the school focuses on renewable energy and sustainable travel practices.

In addition to the Indian School of Nature, our future directions include the development of the Chambal Agritech Incubator. This initiative will support local farmers and entrepreneurs by providing training, resources, and technology to implement sustainable agricultural practices. We plan to enhance our community engagement efforts by expanding educational programs and workshops for both guests and the immediate local population.

By integrating these initiatives into our broader strategy, we aim to further our commitment to preserving the unique environment and culture of the Chambal Valley. Our focus on education, community support, and sustainable development will help ensure that our mission is carried forward and that we continue to make a positive impact.



Environment & wildlife conservation



Climate smart and compatible agriculture



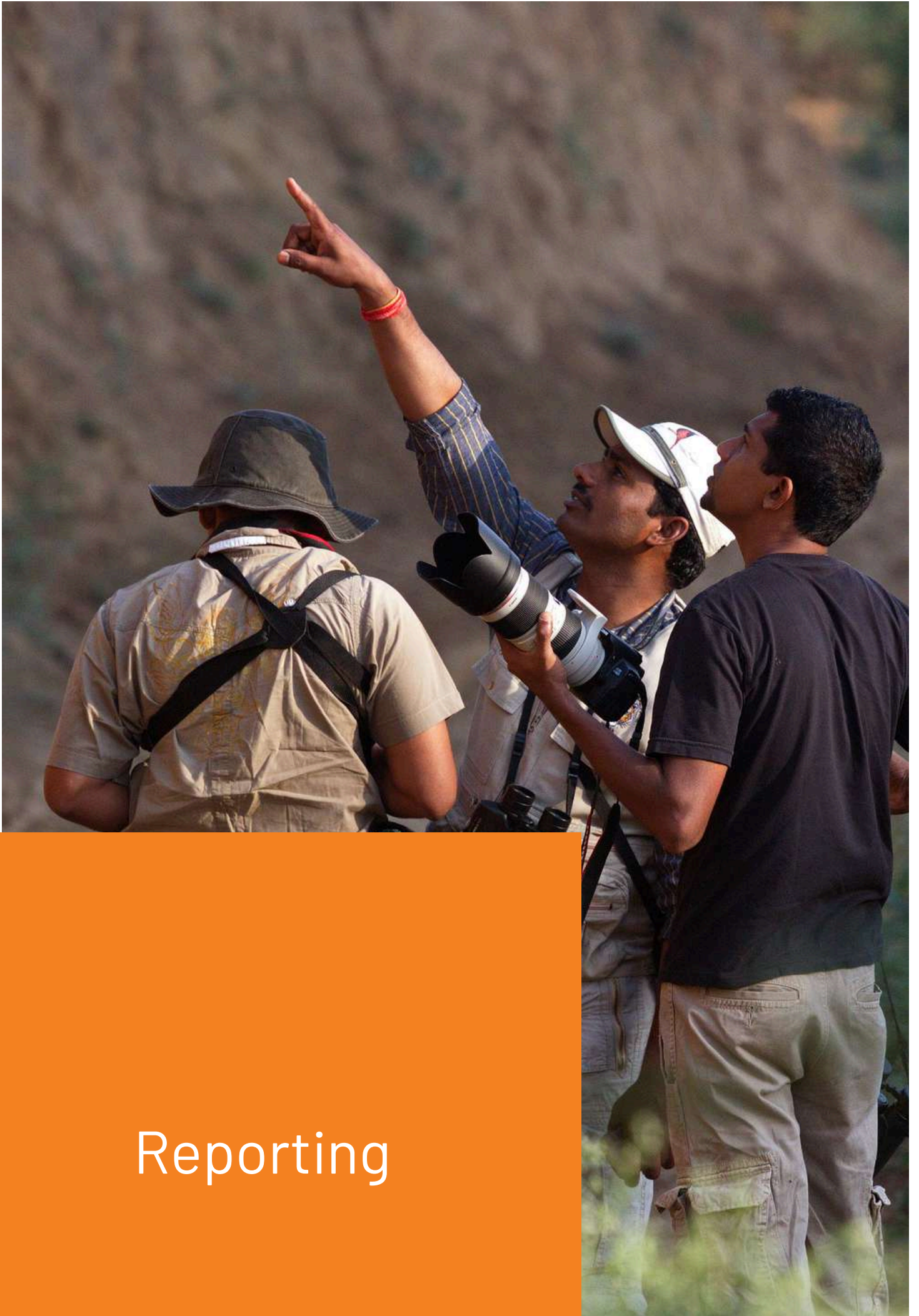
Sustainable development, mitigating/adapting to climate change



Renewable Energy



Travel sustainable



Reporting

Developing the Impact Report

This report has been meticulously prepared in reference to the GRI Standards, covering data from 2023 and providing a transparent, relevant, and comparable overview of our sustainability efforts. It is our commitment to continue this practice as we progress as an organization.

Chambal Safari Lodge is pleased to announce that 2024 marks our first year of voluntarily producing a Business Impact Report, and we are committed to continuing this practice as we progress as an organisation. Our report is designed to reflect our integrated approach in managing sustainability risks and opportunities.

We have engaged ImPart Collective, a Milan-based ESG Collective, as an independent third-party auditor to assess and audit our current sustainable systems. Through a rigorous auditing methodology that is up to date with the latest reporting requirements and standards.

Consultants leading the report:

- Simone Buffa, GRI, CEM Certified
- Diana Perales, ISO 9001
- Marisol Galarza
- Ezekiel Mavani
- Pooja Nataraj Suryanarayana



ImPart - The ESG Collective is an independent business auditing and reporting collective based in Milan, Italy.

The organisation comprises members who are certified GRI reporters as well as ISO certified. With a diverse and international team that includes experts in fields such as tourism, hospitality, law, technology, marketing, agriculture, oil & gas and fashion, ImPart was primarily chosen for its capacity to address the unique challenges associated with creating a report for a eco-tourism lodge, given the experience of the consultants leading the project.

Learn more: www.impartcollective.com



Reporting Framework

Throughout the reporting process, we employed a blend of industry-standard frameworks to ensure comprehensive coverage and alignment of our data, thereby validating our results through multiple reporting methods.

Global Reporting Initiative (GRI): This report utilises references from several selected GRI Standards. We have included a GRI Standards content index, which lists the disclosures and their respective locations throughout our report.

UN Sustainable Development Goals (SDGs)

We have also highlighted where our sustainability efforts contribute to advancing progress on the SDGs.



GRI Index

GRI 2: GENERAL DISCLOSURE		
GRI STANDARD	NUMBER OF GRI DISCLOSURE	PAGE
The organization and its reporting practices	2-1 Organizational details	3, 5, 30
	2-2 Entities included in the organization's sustainability reporting	3, 30
	2-3 Reporting period, frequency and contact point	3, 30
	2-4 Restatements of information	3, 30
Activities and workers	2-6 Activities, value chain and other business relationships	5, 8, 27, 28
	2-7 Employees	5, 9, 27
	2-8 Workers who are not employees	13, 14, 27, 28

GRI 2: GENERAL DISCLOSURE		
GRI STANDARD	NUMBER OF GRI DISCLOSURE	PAGE
Governance	2-9 Governance structure and composition	29
	2-12 Role of the highest governance body in overseeing the management of impacts	29
	2-14 Role of the highest governance body in sustainability reporting	4
	2-18 Evaluation of the performance of the highest governance body	5

Strategy, policies and practices	2-22 Statement on sustainable development strategy	4, 8, 15, 16
	2-23 Policy commitments	7, 8, 15, 16, 27, 28
	2-24 Embedding policy commitments	7, 8, 15, 16, 27, 28
	2-27 Compliance with laws and regulations	29
Stakeholder engagement	2-29 Approach to stakeholder engagement	13, 14

GRI 3: MATERIAL TOPICS 2021		
GRI STANDARD	NUMBER OF GRI DISCLOSURE	PAGE
Disclosures on material topics	3-1 Process to determine material topics	10, 11
	3-2 List of material topics	10, 11
	3-3 Management of material topics	10, 11

GRI SERIES 200: ECONOMICS		
GRI STANDARD	NUMBER OF GRI DISCLOSURE	PAGE
Economic Performance	201-1 Direct economic value generated and distributed	9

GRI SERIES 300: ENVIRONMENT

GRI STANDARD	NUMBER OF GRI DISCLOSURE	PAGE
Energy	301-2 Recycled input materials used	12, 21
	301-3 Reclaimed products and their packaging materials	12, 21
	302-1 Energy consumption within the organization	19, 20
	302-4 Reduction of energy consumption	12, 19
	302-5 Reductions in energy requirements of products and services	12, 21
Water and Effluents	303-1 Interactions with water as a shared resource	20
	303-2 Management of water discharge-related impacts	20
	303-3 Water withdrawal	20
	303-4 Water discharge	20
	303-5 Water consumption	20

GRI SERIES 300: ENVIRONMENT		
GRI STANDARD	NUMBER OF GRI DISCLOSURE	PAGE
Biodiversity	304-1 Operational sites owned, leased, managed in, or adjacent to, protected areas and areas of high biodiversity value outside protected areas	5, 12, 23, 24, 25, 26
	304-2 Significant impacts of activities, products, and services on biodiversity	12, 23, 24, 25, 26
	304-4 IUCN Red List species and national conservation list species with habitats in areas affected by operations	12, 23, 24, 25, 26
Emissions	305-2 Energy indirect (Scope 2) GHG emissions	19
	305-5 Reduction of GHG emissions	12, 19
Effluents and Waste	306-1 Waste generation and significant waste-related impacts	22
	306-2 Management of significant waste-related impacts	12, 22
	306-4 Waste diverted from disposal	12

GRI SERIES 400: SOCIAL		
GRI STANDARD	NUMBER OF GRI DISCLOSURE	PAGE
Employment	401-1 New employee hires and employee turnover	9, 27
	401-2 Benefits provided to full-time employees that are not provided to temporary or part-time employees	27
Occupational Health and Safety	403-6 Promotion of worker health	27
Training and Education	404-2 Programs for upgrading employee skills and transition assistance programs	15, 16, 27
Local Communities	413-1 Operations with local community engagement, impact assessments, and development programs	15, 16, 27
	416-1 Assessment of the health and safety impacts of product and service categories	15, 16

Together we shall
create an ecosystem
in Chambal where all
are at peace with
nature.

 *Chambal Safari*



Acknowledgements

We at Chambal Lodge extend our gratitude to all stakeholders, team members, and partners for their unwavering support and contributions to our sustainability journey. Your dedication and collaboration are integral to our success.

Concept and coordination: ImPart Collective

Report Designed by: NP Evolution SRL, Italy

Chambal Safari Lodge

Mela Kothi Mela Kothi Road Vill &
PO Jarar, Tehsil, Bah, Uttar
Pradesh 283104, India

www.chambalsafari.com